

General Smart Locker Installation



Total
In-House
Production



Design
Criteria



Analysis &
Procurement



Engineering



Bench Testing



Mechanical
Design



Cutting



Bending



Welding



Grinding



Painting

Designed Practically,
Engineered Brilliantly,
Built Flawlessly.



From Concept To Completion

Meridian is a self-service industry pioneer, leading in innovation and precision since being founded in 1999. A fully integrated manufacturer, Meridian designs, engineers, fabricates, assembles, deploys and supports self-service solutions from our 13-acre headquarters in North Carolina.

Meridian is an ISO 9001:2008 certified company and UL self-certify facility. With processes from software development to powder coating and quality control, all being completed in house, Meridian proudly offers American-made interactive solutions to a global marketplace.




Delivering American Made
Self-Service Solutions Since 1999



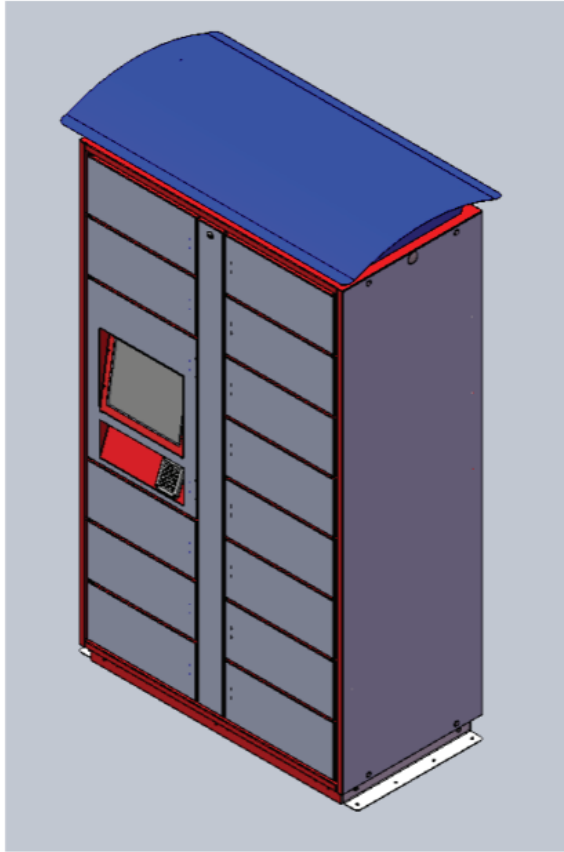
General Locker Installation

Use the following details to determine your mounting hole location depending on how many locker cabinets your assembly includes. Each of these details provide exact measurements for any and all mounting locations needed. The side mounting strips shown are attached on either side of the cabinet and along the rear for any setup larger than 1 cabinet. (Fig. 1.1 - 1.4)

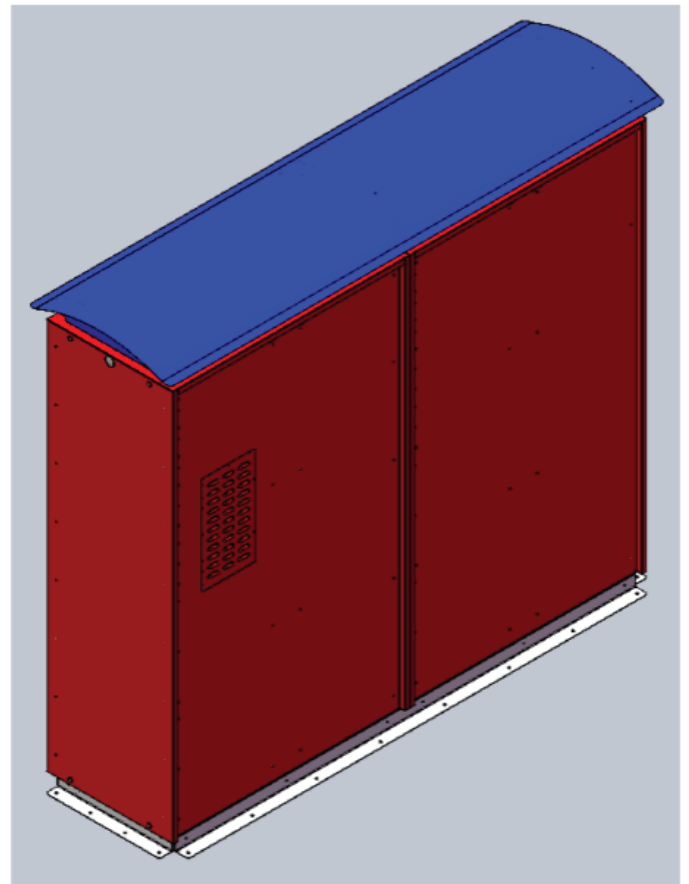


MERIDIAN

General Locker Installation



1-3



1-4

MERIDIAN

General Locker Installation

Once the cabinet(s) are lagged down into position, power will need to be plugged up and data cables run. The main power is located in the main components cabinet and is simply plug and play. (connect power after all other cables have been installed) The data cables and power cables running to the secondary cabinet will do so through the top of the kiosk cabinet. The cables will already be plugged into the lower side of the second (lower) daughter board on the main cabinet and run up for easy installation. (Fig 2.1) Data will be provided by a standard Cat5 cable and power will come from the three wire power cord. (Shown with the green connector) These cables will plug into the bottom side of the top daughter board on each additional cabinet as shown. (Fig 2.2) With power and data cables installed you can now plug in the main power for the locker assembly.



2.1

MERIDIAN

General Locker Installation



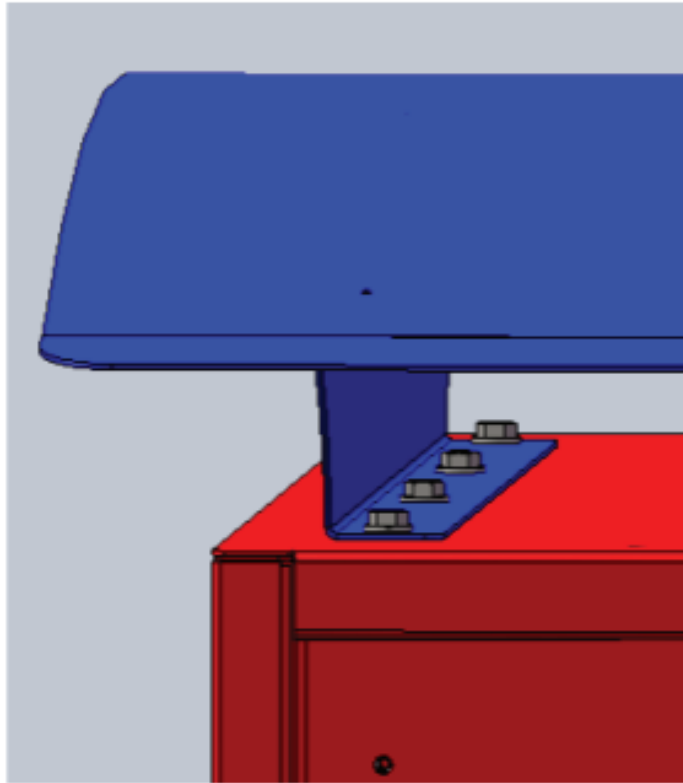
2.2

Canopy Installation:

Now that the assembly has power and data ran to each cabinet the top cover and canopy can be installed. Each cabinet has its own top cover which the main canopy mounts to using (Qty 8) ¼-20 x ¾" Grade 8 Hex bolts. **(Fig 3.1 and 3.2)** With the canopy secured in place, the top plates can then be screwed into place using the (Qty 20) 10/32 screws provided.

MERIDIAN

General Locker Installation



3-1



3-2

Corporate Headquarters

312 S Pine Street
Aberdeen, NC 28315
+1 866 454 6757
sales@mzero.com

meridiankiosks.com

